

FREEDOM TO MOVE



THE WANDER EFFECT

Uniquely designed to provide a wide lateral distribution of up to 25 feet on-center fixture spacing for a grand 50-foot light path. The Wander pathway family offers a one-of-a-kind lighting spread and smoothness. Wander redefines the visual limits of open spaces that vastly outpace pathways and wall luminaires in its category.



25 ft

25 ft

PM3 34" LM 1500lm 5000k



CLASSICALLY HYDREL, PERSONALLY YOURS

Wander is a broad family of luminaires offering multiple mounting configurations - pedestal, semi-recessed and surface mount - that provide visual continuity for pathways, step, and wall lighting applications. Aesthetically pleasing in a minimalist design, Wander offers IK10, 3G, IP67 ratings, and Dark Sky U0 compliance for a low-maintenance, durable luminaire for urban settings.



CONNECTING PEOPLE AND PLACES

Waterfront Pathway: Wander1 22" MW 3500K
Park Pathway: Wander1 22" MW 3500K
Tree Lighting: SAF7 Narrow FLAME, SAF1 Static White 50DEG 3500K
Plaza: SAF1 100DEG on Pole 4000K



WHAT A DIFFERENCE A LIGHT MAKES



Retaining Wall: Wander1 SMR LM 3500K Custom Finish
Pathway: Wander1 22" SW 3500K Custom Finish
Tree Lighting: SAF7 Narrow FLAME
Façade Lighting: Tierra4 Ingrade 3000K 60DEG, 4750L Linear Floodlight 1000LMF 3000K MFL



WANDER.FUL

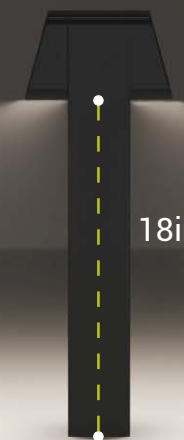


- Two Heights
- One or three optics
- Pedestal Mount (PM)

Static White, Monochromatic Colors, Amber 591nm Options
Dark Sky "U0" approved



- Direct or Indirect Lighting
- One or three optics
- Surface (SM) or Semi-Recessed Mount (SRM)



- Single or Double Head

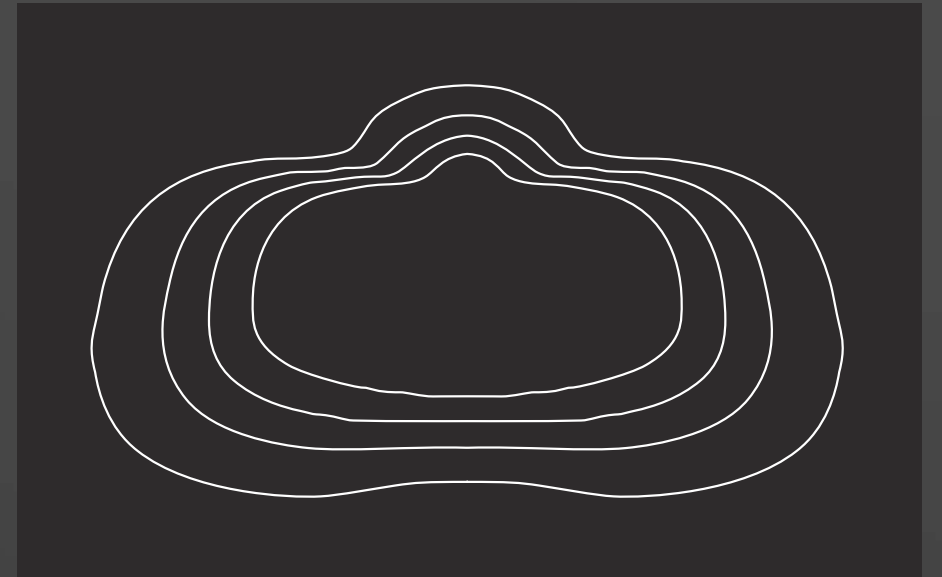


WHEN LESS IS MORE

Wander offers three tailored distributions for a wide range of applications with no striations or color separation. Options range from very wide lateral spread to long forward distribution, allowing fixture spacings and uniformity to be unmatched in today's marketplace. The result is the ability to light environments with fewer luminaires. With 50% more coverage than current luminaires in its category, Wander is genuinely a high-performing luminaire.

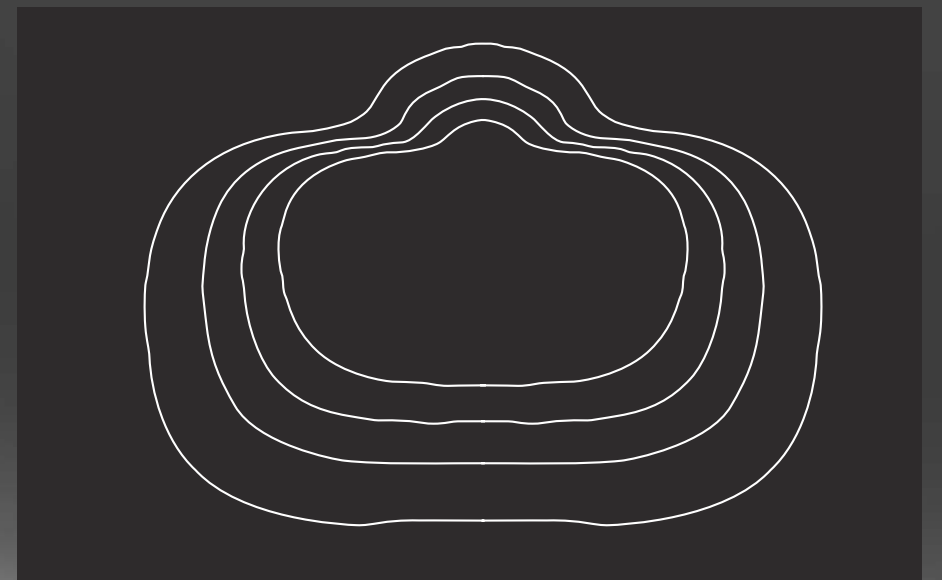
Short Wide Distribution (SW)

For applications needing a wide lateral distribution, fixtures are spaced farther apart or for shallow pathways.



Medium Wide Distribution (MW)

For applications that need to fill larger gaps along pathways, fixtures are at a closer distance, or paths are medium width.



Long Medium Distribution (LW)

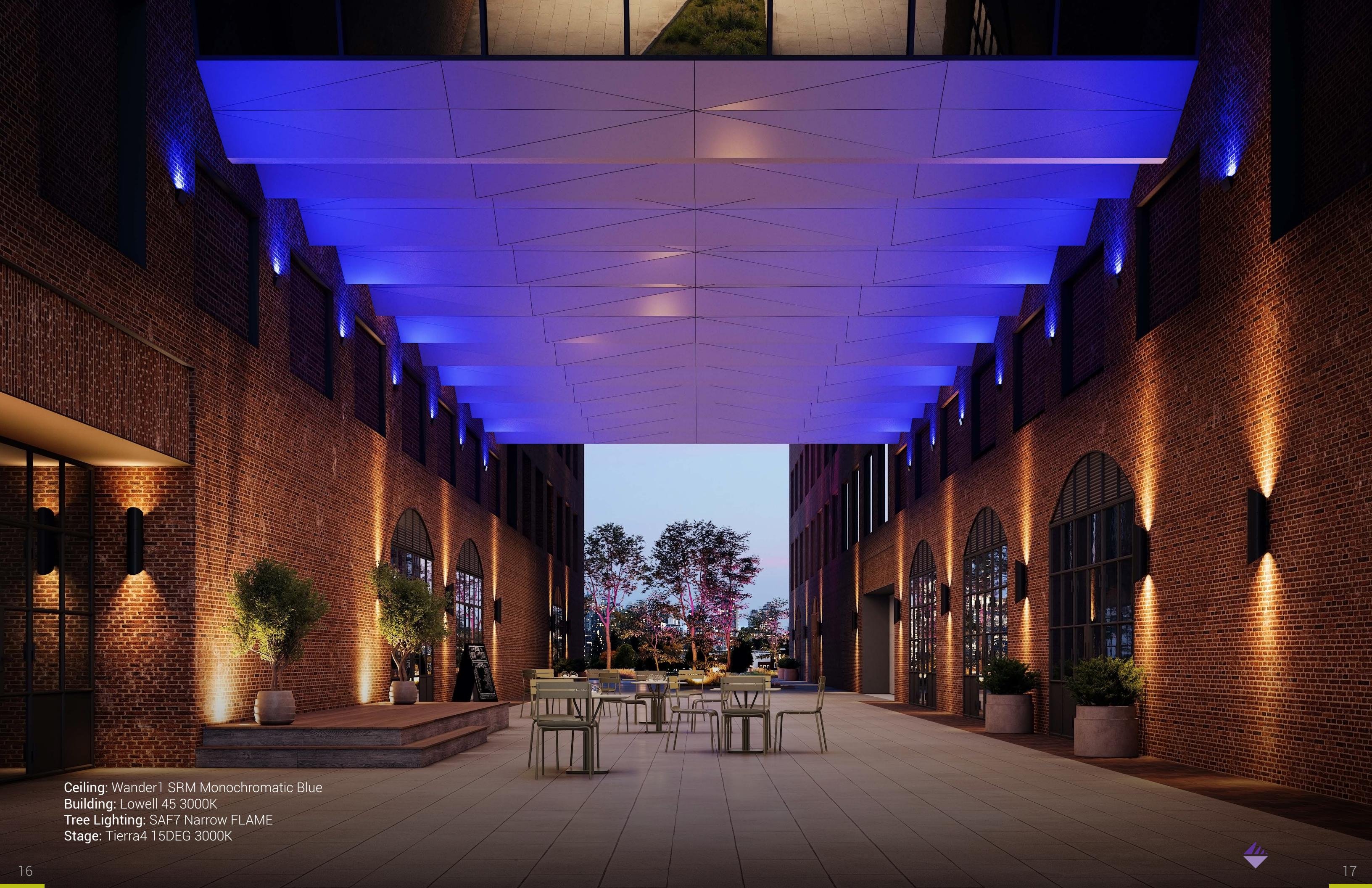
For deep, long paths or applications where fixtures need to be closer together.



FREEDOM TO MOVE

A naturally inspired pathway light that combines a unique optical design with spectacular visual comfort. Impressive beam smoothness, wide even throw, and consistent uniformity come together like never before. Experience powerful lighting performance to confidently travel new paths and open spaces with Wander from now on.





Ceiling: Wander1 SRM Monochromatic Blue
Building: Lowell 45 3000K
Tree Lighting: SAF7 Narrow FLAME
Stage: Tierra4 15DEG 3000K



THE LOOK OF WANDER

Steps and Retain Wall: Wander1 SRM MW 500LM
Building Entrance: Wander1 SRM indirect and direct lighting SW 300LM
Bicycle Parking Station: Wander1 SRM SW 300LM
General Pathway: Wander3 22" MW 1500LM
Tree Lighting: SAF1 RGBW



FIXTURE SPACING CALCULATION

Footprint From On-Center Fixture Spacing

MH	LM	Optics	Distribution	Width	Length
18"	300	1	LM	6ft	7.6ft
			MW	9.6ft	6.6ft
			SW	12.6ft	5ft
34"	300	1	LM	8ft	10ft
			MW	12ft	8.6ft
			SW	15ft	7.6ft
18"	500	1	LM	8ft	8ft
			MW	11ft	7ft
			SW	14.5ft	5.5ft
34"	500	1	LM	8.6ft	11.6ft
			MW	9.6ft	16ft
			SW	10.6ft	18.6ft
18"	1000	3	LM	7.6ft	10ft
			MW	13ft	8.6ft
			SW	16.6ft	6.6ft
34"	1000	3	LM	12ft	14ft
			MW	16.6ft	13ft
			SW	22.6ft	10ft
18"	1500	3	LM	8ft	11ft
			MW	14ft	9ft
			SW	18.6ft	7ft
34"	1500	3	LM	13ft	15ft
			MW	20ft	13ft
			SW	25ft	11ft

Note
MH: Mounting Height
LM: Delivered Lumens

* Calculation assumes continuous fixture spacing to achieve 1fc egress minimum.



The 1500-delivered lumen package produces a maximum of 60 fc in a hotspot below the fixture when mounted at 18".

Recommendations:

- 1500-delivered lumen package: for use with a 34" mounting height.
- 300-delivered lumen package: Best with 18" mounting heights or low illuminance level applications.



Visual Lighting is an intuitive modeling software tool to develop a lighting design for interior and exterior spaces. It combines lighting and energy calculation tools to create lighting designs and provides comprehensive intelligence and analysis for advanced lighting projects.

Select Hydrel >> Wander>>

FREEDOM TO MOVE

- PM1 34" MW 500LM
- SRM1 LW 300LM
- PM1 18" SW 300LM
- PM1 34" MW 500LM
- PM3 34" LM 1500LM
- PM1 34" MW 500LM



50 ft long, 4.5 ft wide

95 ft long, 9 ft wide

50 ft long, 4.5 ft wide

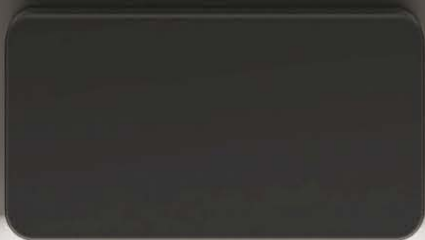
128 ft long, 22 ft wide

AMBIENCE LIGHTING

Pathway: Wander1 34" LW Amber 591nm and Wander3 22" LW Amber 591nm
Retaining Wall: Wander3 SRM SW Amber 591nm
Tree lighting: Palm Static White 2700K 60DEG on Tree Ring
Restaurant Canopy: 4750L Linear Floodlight RGBW Continuous Run 4ft



WANDER ON



Options

IK10

IP67

3G
VIBRATION
TESTED

MVOLT

12VOLT

Lighting Controls

0-10V ELV

Color temperatures

Amber 591nm

2700K

3000K

3500K

4000K

Red

Green

Blue

Delivered Lumens

300LM to 1500LM

Distributions

Long Medium

Medium Wide

Short Wide

Compliance

BAA

Dark Sky

Finishes

BL - Black Textured

BRS - Bronze Smooth

BRT - Bronze Textured

DNA - Natural Aluminum Smooth

DBL - Designer Black Smooth

DDB - Designer Bronze

NBS - Natural Bronze Smooth

WH - White Textured

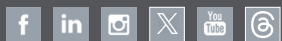
WHS - White Smooth

- Zinc Undercoat
- Custom Finish
- RAL Paint Finish





LET'S CONNECT



Hydrel.com

Phone: 800.705.SERV (7378)

Email: Tech support - Techsupport-hydrel@acuitybrands.com

©2025 Acuity Brands Lighting, Inc. All rights reserved.

 **Acuity**Brands.