

**MARK** ARCHITECTURAL  
LIGHTING

**Peerless**<sup>®</sup>

 **HYDREL**<sup>®</sup>

# DESIGN2SHIP<sup>™</sup>

## QUICK SHIP PROGRAM

---

---

# Program Overview

Business moves quickly and our architectural solutions move fast with you. The Acuity Brands® Design2Ship™ Quick Ship program helps you grow your business. Spend more time securing new business rather than waiting for lighting shipments.

## Program Details

### How to order

1. All Design2Ship orders must be activated through Agile
2. Ship dates are 5 business days from date of clean release. Order lines must process and validate upon entry.
  - For Mark, Peerless, and Hydrel the complete Design2Ship catalog number(s) will include "QS" if part of the program. If you have an UNK, NCI, or BOM status, re-check your spec sheet to correct nomenclature.
3. Products not included in the Design2Ship program should be entered on a separate purchase order.\*
4. Please be aware of the maximum order quantity listed on the product specification sheet. \*\*
5. Please indicate any shipping notes or site restrictions.
6. Order requirements include:
  - Complete ship-to address
  - Contact information
  - Complete quick ship catalog number
  - Pricing and commission rate
7. Orders flagged as Ship Complete, with grouped lines or with "Not Before" dates will not qualify for the Design2Ship program.

\*Orders that include products not in the Design2Ship program will default to the longest lead time.

\*\*If an order exceeds the product specification sheet quantity, then the following shall apply:

- If less than or equal to two times the maximum Design2Ship quantity, the order will be split into two delivery dates. The first shipment will go in 5 days, followed by the second in 10 days.
- If the order is more than two times the maximum Design2Ship quantity, then the order will not qualify as a Design2Ship order.

### Shipping

Shipping lead time is 5 business days from date of clean release. All orders received after 3:30 p.m. EST will be processed the next business day and will receive an estimated ship date (ESD) from that date.

### Notes

- Specifications subject to change without notice.
- Actual performance may differ as a result of end-user environment and application.

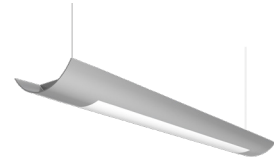
Chisel™



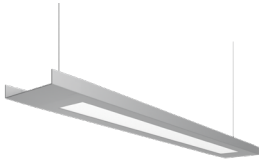
Magellan



Pillar Pendant



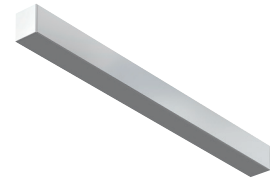
Planar Pendant



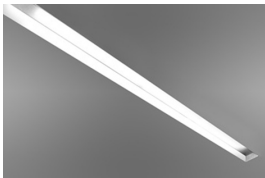
Slot 2 Family



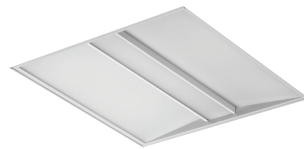
Slot 4 Family



SPR



Whisper

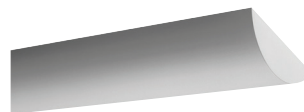


# Peerless®

Bruno



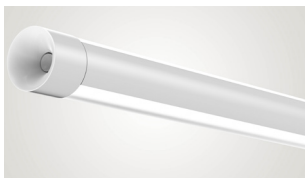
Cerra 7



Cerra 10



Round



Square



4750L



Aspen



Hyline 100



Hyline 200



Hyline 300



Hystep



M9400C



M9700C



Paradox

