

**WORLD
LANDSCAPE
ARCHITECTURE
MONTH**



Project: University of Chicago - David Rubenstein Forum
Location: Chicago, IL | **Agent:** NY Digital / KSA Lighting & Controls
Specifier: Tillotson Design Associates / DILLER SCOFIDIO + RENFRO
Brands: Aculux® | **Photographer:** Brett Beyer

WORLD
LANDSCAPE
ARCHITECTURE
MONTH



Project: I-20/I-59 Bridge Overpass | Location: Birmingham, AL
Agent: AMA Lighting
Specifier: Volkert and Associates / Domingo Gonzalez Associates
Architectural Lighting Design / Barge Waggoner Summer & Cannon,
Inc.
Brands: Winona® Lighting | Photographer: Joe Songer, AL.com

WORLD
LANDSCAPE
ARCHITECTURE
MONTH



Project: Private Residence | Location: Key Biscayne, FL
Specifier: Diego Fernandez Powerhouse Lighting
Brands: Aculux® | Photographer: Mark Steele Photography

WORLD
LANDSCAPE
ARCHITECTURE
MONTH



Project: Cottonwood Heights City Hall | Location:
Cottonwood Heights, UT
Agent: JRC | Specifier: Spectrum Engineers
Brands: Gotham® Lighting, Lithonia Lighting®
Photographer: Endeavour Architectural Photography

WORLD
LANDSCAPE
ARCHITECTURE
MONTH



Project: Four Seasons Astir Palace Hotel Athens | Location: Athens, Greece
Specifier: Lighting Design International (LDI) | Brands: eldoLED®
Photographer: GavriiLux Photography

WORLD
LANDSCAPE
ARCHITECTURE
MONTH



Project: Society Las Olas Apartments | Location: Fort Lauderdale, FL
Agent: Power & Lighting Systems, Inc. | Specifier: HLB Lighting Design
Brands: Luminis® | Photographer: Chad Baumer

WORLD
LANDSCAPE
ARCHITECTURE
MONTH



Project: Seaplane Lagoon Ferry Terminal | Location: Alameda, CA
Specifier: Marcy Wong Donn Logan Architects / HLB Lighting
Brands: Luminis® | Photographer: Billy Hustace Photography

WORLD
LANDSCAPE
ARCHITECTURE
MONTH



Project: Private Residence | Location: St. George, UT
Agent: JRC Lighting | Specifier: Designer: Kevin Meredith
Brands: Aculux® | Photographer: Aaron Shaw

WORLD
LANDSCAPE
ARCHITECTURE
MONTH



Project: The Madison Center for the Arts | Location: Phoenix, AZ
Agent: RC Lurie | Specifier: ADM Group, Inc.
Brands: Luminis® | Photographer: Kyle Zirkus

WORLD
LANDSCAPE
ARCHITECTURE
MONTH



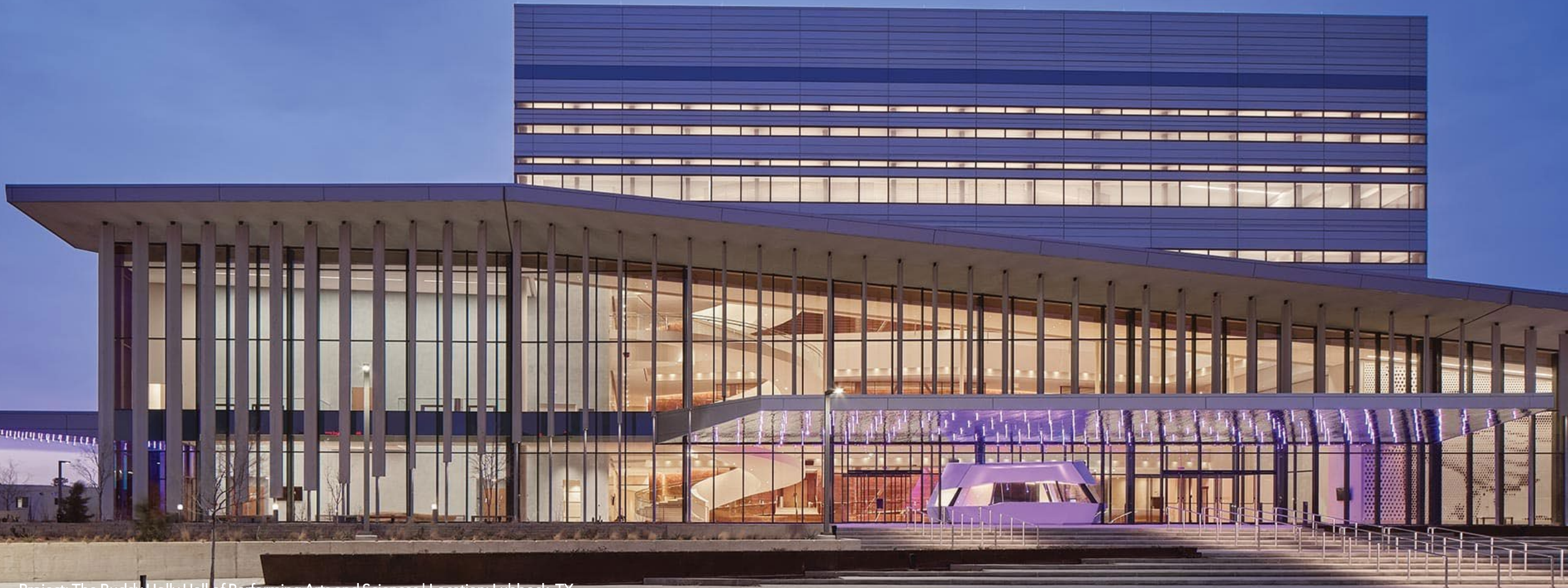
Project: Maryland Bridge | Location: Columbia, MD
Agent: Federated Lighting | Specifier: Todd Vizcarrondo
Brands: Lithonia Lighting®

WORLD
LANDSCAPE
ARCHITECTURE
MONTH



Project: Nipissing University Student Union Student Centre | Location: North Bay, ON, Canada
Agent: Electratek | Specifier: Mitchell Jensen Architects / Kenalex
Brands: Luminis®, Mark Architectural Lighting™
Photographer: Scott Norsworthy

WORLD
LANDSCAPE
ARCHITECTURE
MONTH



Project: The Buddy Holly Hall of Performing Arts and Sciences | Location: Lubbock, TX
Agent: Acuity Brands GTA | Specifier: Designer: Consullux Lighting Consultants / Architect:
Diamond Schmitt Architects
Brands: Gotham® Lighting, Mark Architectural Lighting™, Winona® Lighting
Photographer: Casey Dunn

WORLD
LANDSCAPE
ARCHITECTURE
MONTH



Project: University of South Carolina | Long Family Football Operations Center | Location:
Columbia, SC
Agent: JG Murphy | Specifier: Quackenbush Architects + Planners
Brands: Mark Architectural Lighting™
Photographer: Christy Radecic

WORLD
LANDSCAPE
ARCHITECTURE
MONTH



Project: Guardian Life Hudson Yards | Location: New York, NY
Agent: NY Digital | Specifier: Perkins and Will / HDLC Architectural Lighting Design
Brands: Aculux®, Gotham® Lighting, Mark Architectural Lighting™
Photographer: Eric Laignel

WORLD
LANDSCAPE
ARCHITECTURE
MONTH



Project: I-20/I-59 Bridge Overpass | Location: Birmingham, AL
Agent: AMA Lighting | Specifier: Volkert and Associates /
Domingo Gonzalez Associates Architectural Lighting Design / Barge Waggoner Summer &
Cannon, Inc.
Brands: Winona® Lighting | Photographer: Joe Songer, AL.com