



A Complete Guide to Pole Drillings

Specifying luminaire, arm and other drillings not on specification sheets

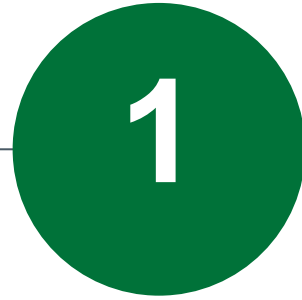
7/1/25



Agenda

- 1) [Standard Drilling Details](#)
- 2) [Special Drilling Nomenclature](#)
- 3) [Acuity Luminaire Drill Templates](#)





Standard Drilling Details

STANDARD DRILLING NOMENCLATURE

Mounting²

Tenon mounting

PT	Open top (includes top cap)
T20	2-3/8" O.D. (2" NPS)
T25	2-7/8" O.D. (2-1/2" NPS)
T30	3-1/2" O.D. (3" NPS)
T35	4" O.D. (3-1/2" NPS)

DSX/RSX/OMERO™ Drill mounting³

DM19AS	1 at 90°
DM28AS	2 at 180°
DM29AS	2 at 90°
DM39AS	3 at 90°
DM49AS	4 at 90°

RAD drill mounting³

DM19RAD	1 at 90°
DM28RAD	2 at 180°
DM29RAD	2 at 90°
DM39RAD	3 at 90°
DM49RAD	4 at 90°

ESX Drill mounting³

DM19ESX	1 at 90°
DM28ESX	2 at 180°
DM29ESX	2 at 90°
DM39ESX	3 at 90°
DM49ESX	4 at 90°

Arm drill mounting

To be added as series + drill orientations

EX: SMAC19 for SMAC arm drilling 1 at 90°

The standard nomenclature formula for this is, **DMxyz**.

DM	=	Drill mounting
x	=	# of luminaires
y	=	Pole orientation/side for drillings
z	=	Luminaire drill template (see section 3 for templates)

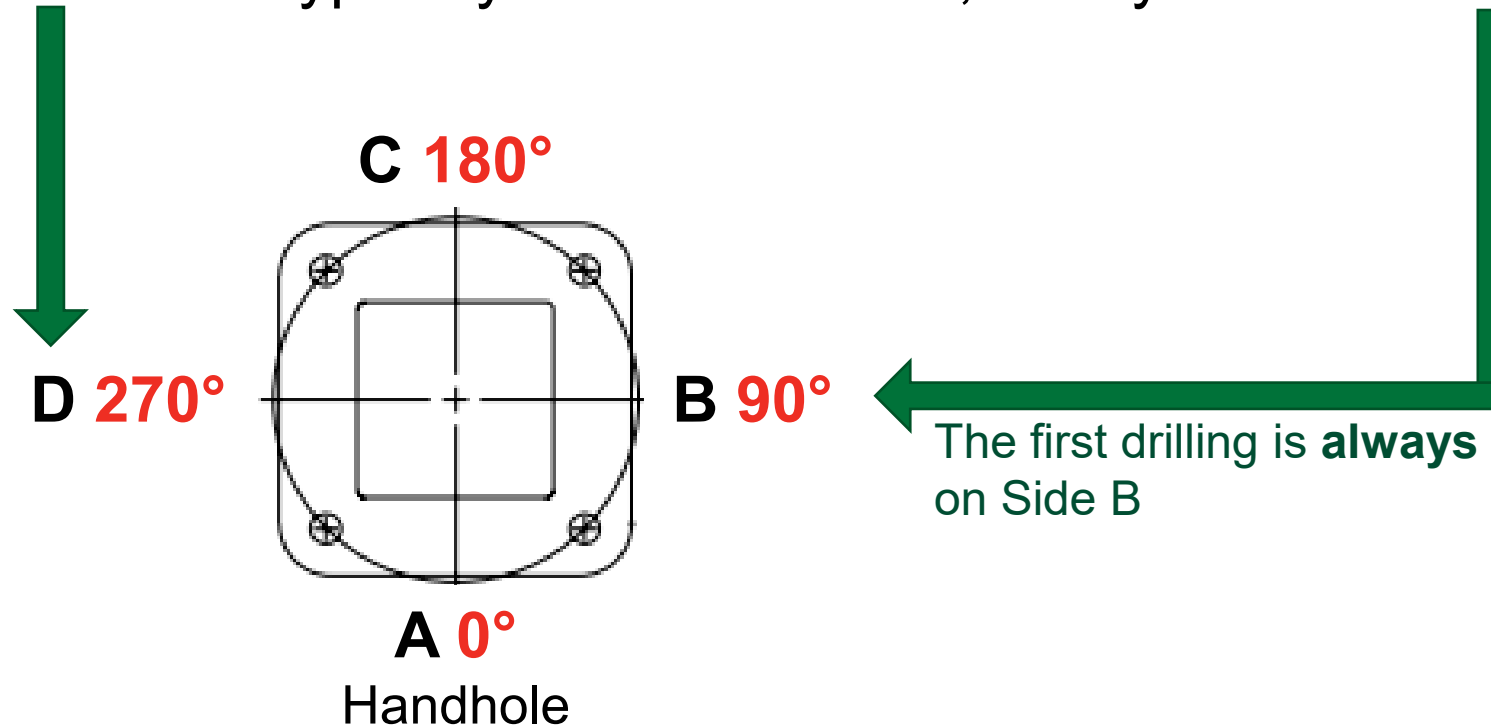
EX:

DM28RAD = Drill mount, 2 luminaires, located @ 180°, for Radean™



POLE ORIENTATION, “y”

Acuity pole orientation is the opposite of most other manufacturers. In the below diagram, side **D** would typically be 90° . Instead, Acuity uses side **B** as 90° .

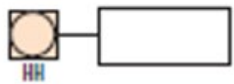


The Handhole is **always** on Side A,
18" or 12" above the base*

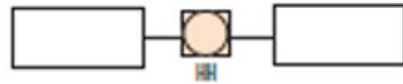


STANDARD DRILLING ORIENTATIONS, “x” and “y”

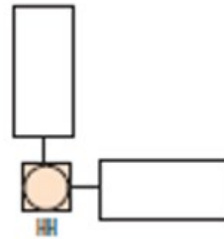
There are a few standard combinations of the “x” (# of luminaires) and “y” (drilling orientations).



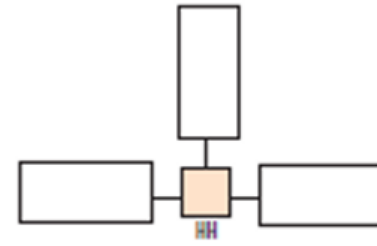
DM19
1 Drilling @ 90°
or
Side B



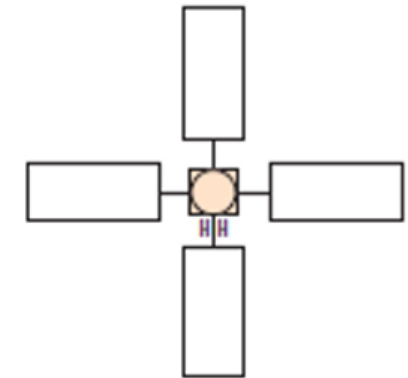
DM28
2 Drillings @ 180°
or
Sides B and D



DM29
2 Drillings @ 90°
or
Sides B and C



DM39
3 Drillings @ 90°
or
Sides B, C and D



DM49
4 Drillings @ 90°
or
Sides B, C, D
and A

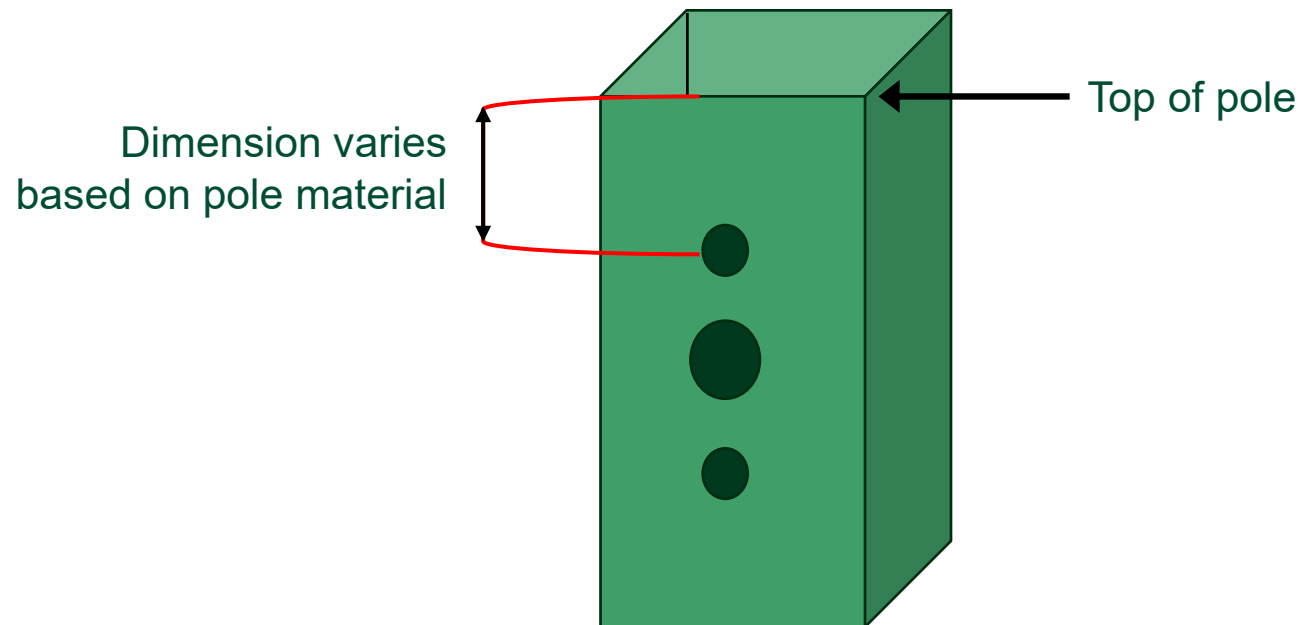


POLE HEIGHT

Just as there is a standard side for drill mountings (side B, 90°), there is a standard height the drilling are at.

For steel and fiberglass poles, drillings will be located **2.75"** from the top of the pole.

For aluminum poles, drillings will be located **1.75"** from the top of the pole.



STANDARD ARM DRILLINGS

We can also provide arm drilling patterns for Acuity Brands Arms.

EX: Arm drilling patterns*

AMAC19 = drilling for AMAC 1 @ 90

AMACE28 = drilling at 2 @ 180

SMAC39 = drilling at 3 @ 90

SMACU49 = drilling at 4 @ 90



**Same ordering rules apply from section 1 and 2 of PPT. Can specify height/location of drilling*



2

Standard Drilling Options - Not on Specification Sheet

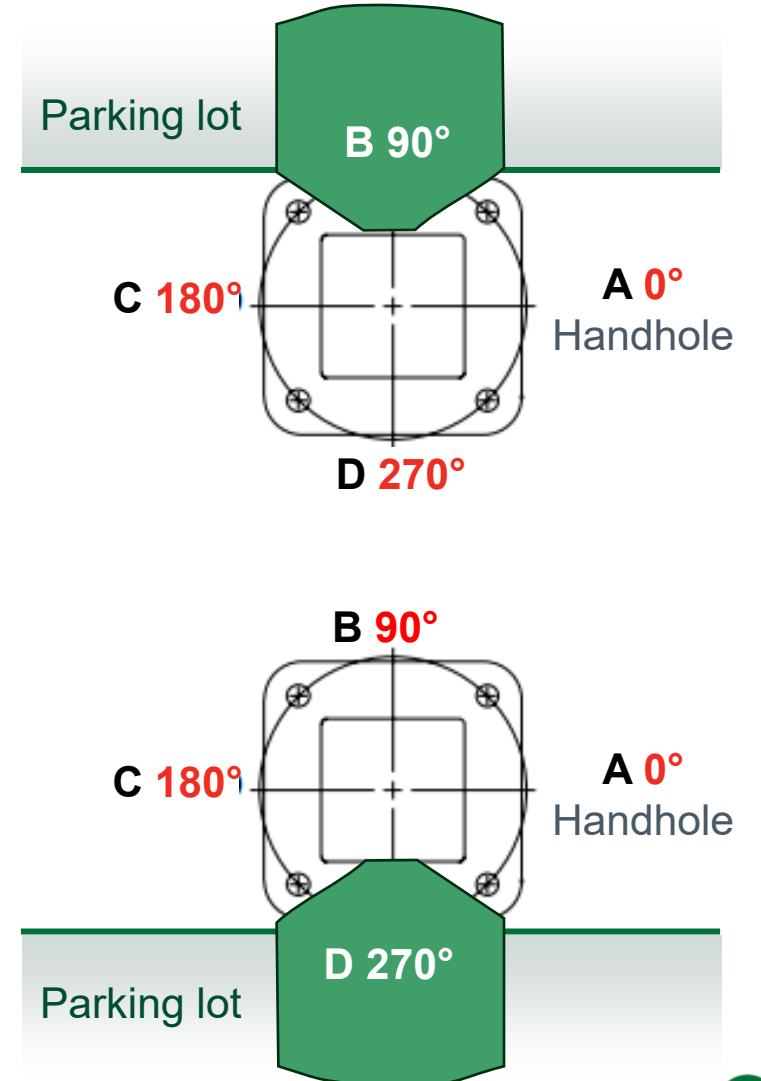
ORDERING SPECIFIC DRILLING ORIENTATIONS

For drillings in orientations outside of the standards listed on slide 6, order the standard drilling nomenclature listed on the spec sheet and add, “/” + the sides required.

EX:

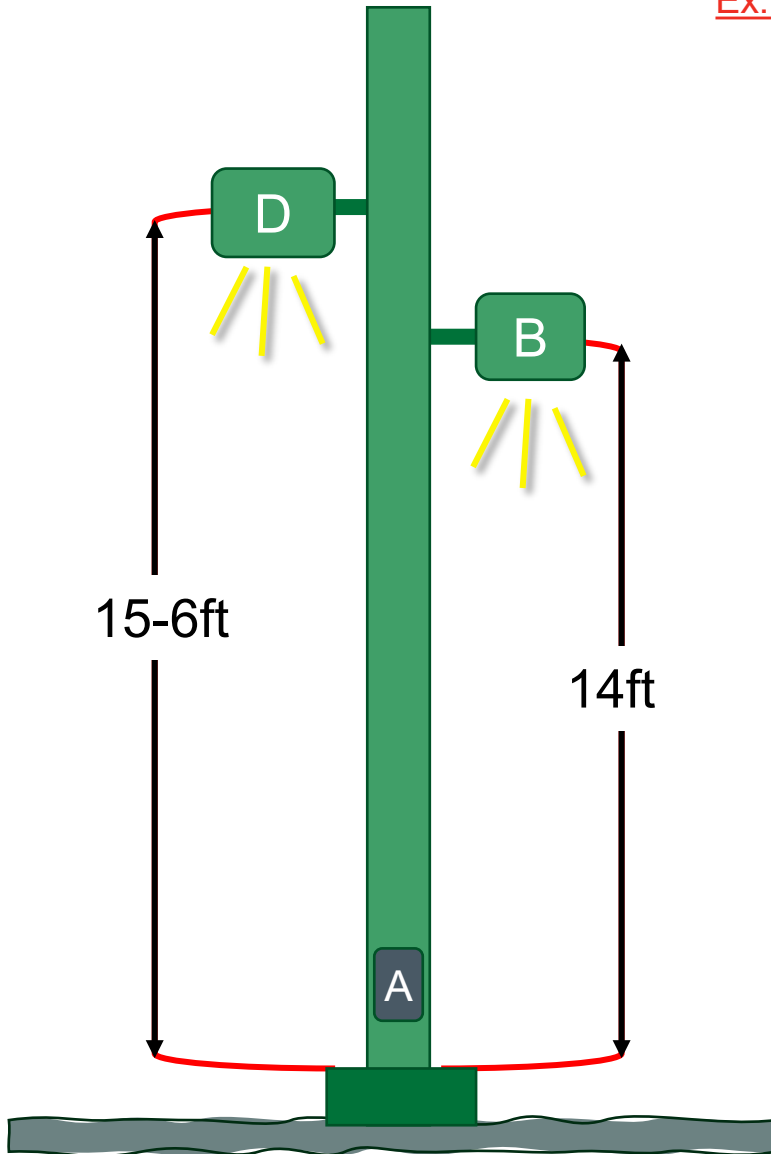
1. You need DM19 but on side D instead of side B.
You would order as **DM19/D**.
2. You need DM28 but on sides A and C instead of B and D.
You would order as **DM28/AC**.
3. You need DM29 but on sides C and D instead of B and C.
You would order as **DM29/CD**.

Ex. 1



ORDERING SPECIFIC DRILL HEIGHTS

Ex. 3



If you need a drill height that is lower than standard heights, you can order the standard drilling nomenclature with a slash “/” + the height.

EX:

1. You need the DM19 and the luminaire to be mounted 15’ on a 20’ pole.

You would order **DM19/15**.

2. You need the DM32 and the luminaire to be mounted 3’6” below the top of a 35’ pole.

You would order **DM32/31-6**.

3. You need the DM28 and one luminaire mounted @14’, and the other @15-6’.

You would order **DM28/14B/15-6D**. In this case, you must specify height and orientation.



ORDERING ROUND DRILLINGS

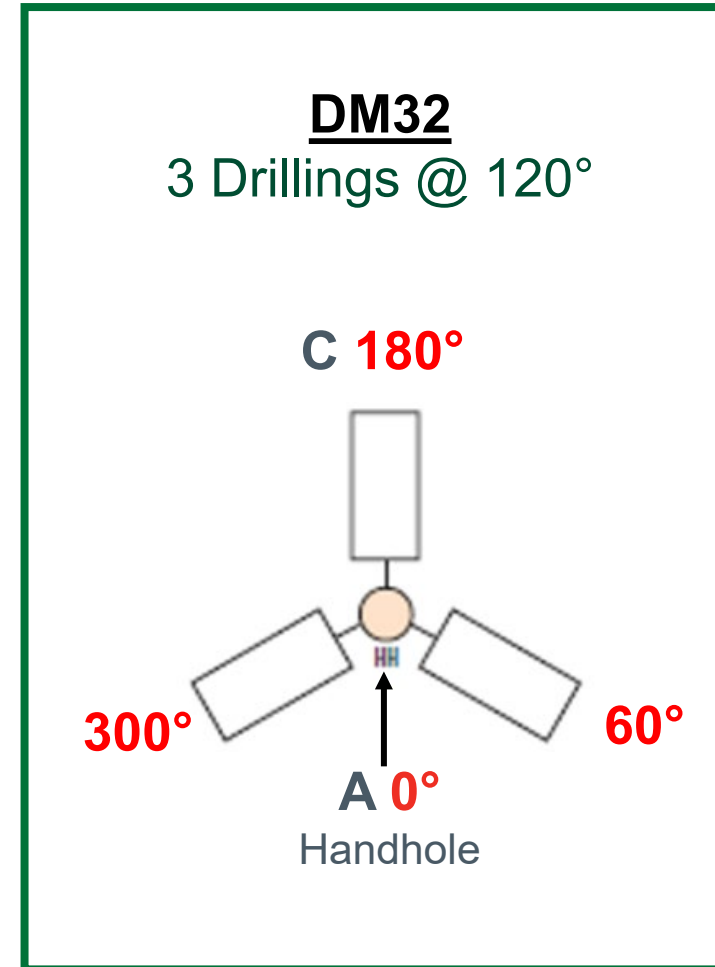
Round poles use all the same drilling locations listed on slide 6. HOWEVER, round poles have all 360° available for use. This means **DM32** is an option. This option drills at angles **60°, 180°, and 300°**.

If you need a drill height that is lower than standard heights, follow rules on slide 10.

If you need drillings at other angles that do not conform to A,B,C or D or DM32, you can order the closest standard drilling nomenclature with a slash “/” + the angleDEG.

EX:

1. You need 1 drilling @ 45° for DSX. You would order **DM19AS/45DEG**.



ORDERING DRILLINGS with TENONS

Some applications require tenons and drillings. In these cases, order the standard drilling nomenclature listed on the spec sheet and add, “/” + tenon desired nomenclature.

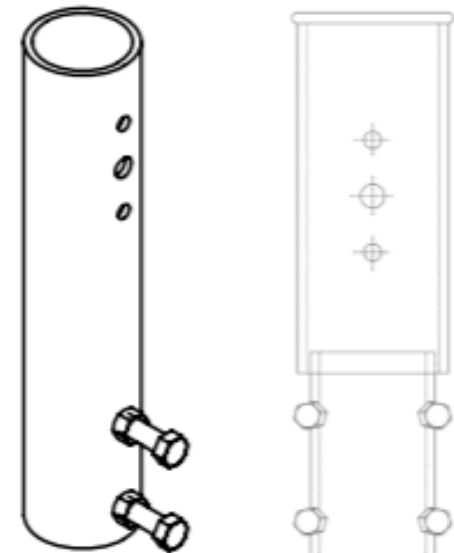
EX:

1. You need DM29 with a T20.

You would order as **DM29/T20**.

2. You need DM28AS but on sides A and C instead of B and D AND with a T30.

You would order as **DM28/AC/T30**.



DRILLING FOR COMPETITOR LUMINAIRES

We can provide drilling positions and drilling patterns for any luminaire, even if it is not ours. Use “**SPDRILLxy**” in place of standard pole mounting options, where “**x**” is # of luminaires and “**y**” is pole orientation.

EX:*

SPDRILL49 = Special drilling, 4 Luminaires, located @ 90°

Once the order is placed, please reach out to Poles Product Support and provide:

1. The order number
2. The drilling template needed



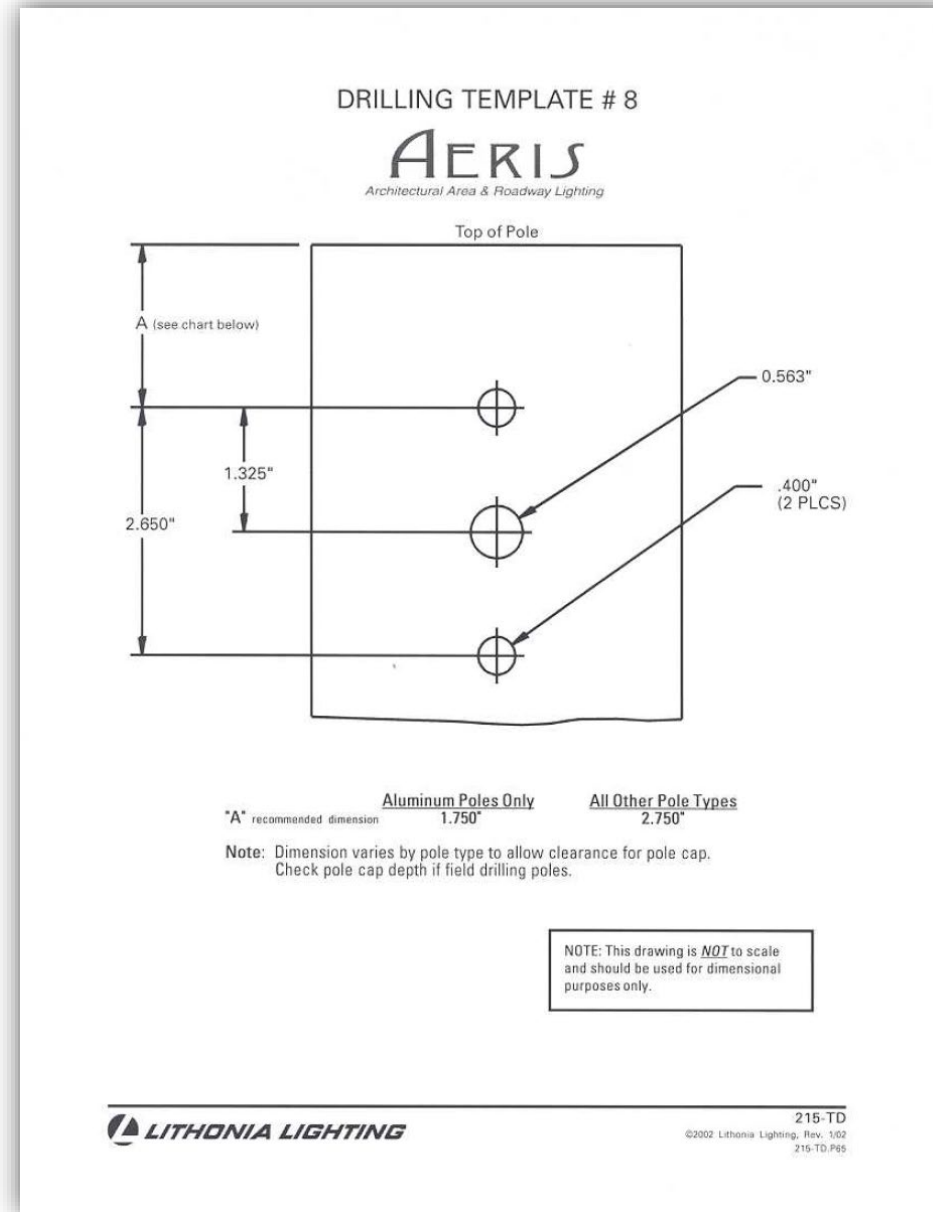
3

Acuity Luminaire Drilling Templates

Lithonia: DMxxAS - Template #8

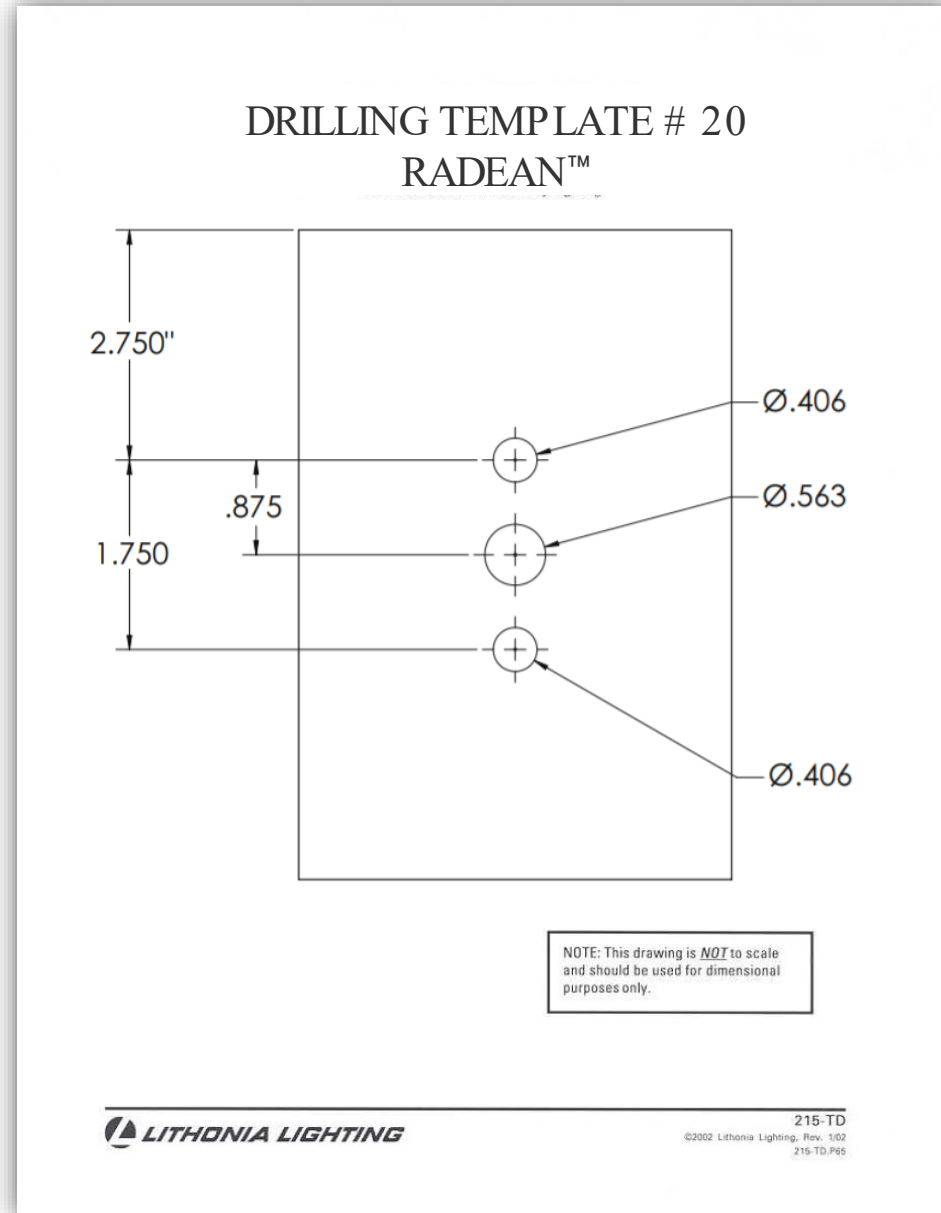
Use with RSX and DSX

DISCONTINUED: CSX, AS, AS1 (Aeris), MR, MR1 (Omero)



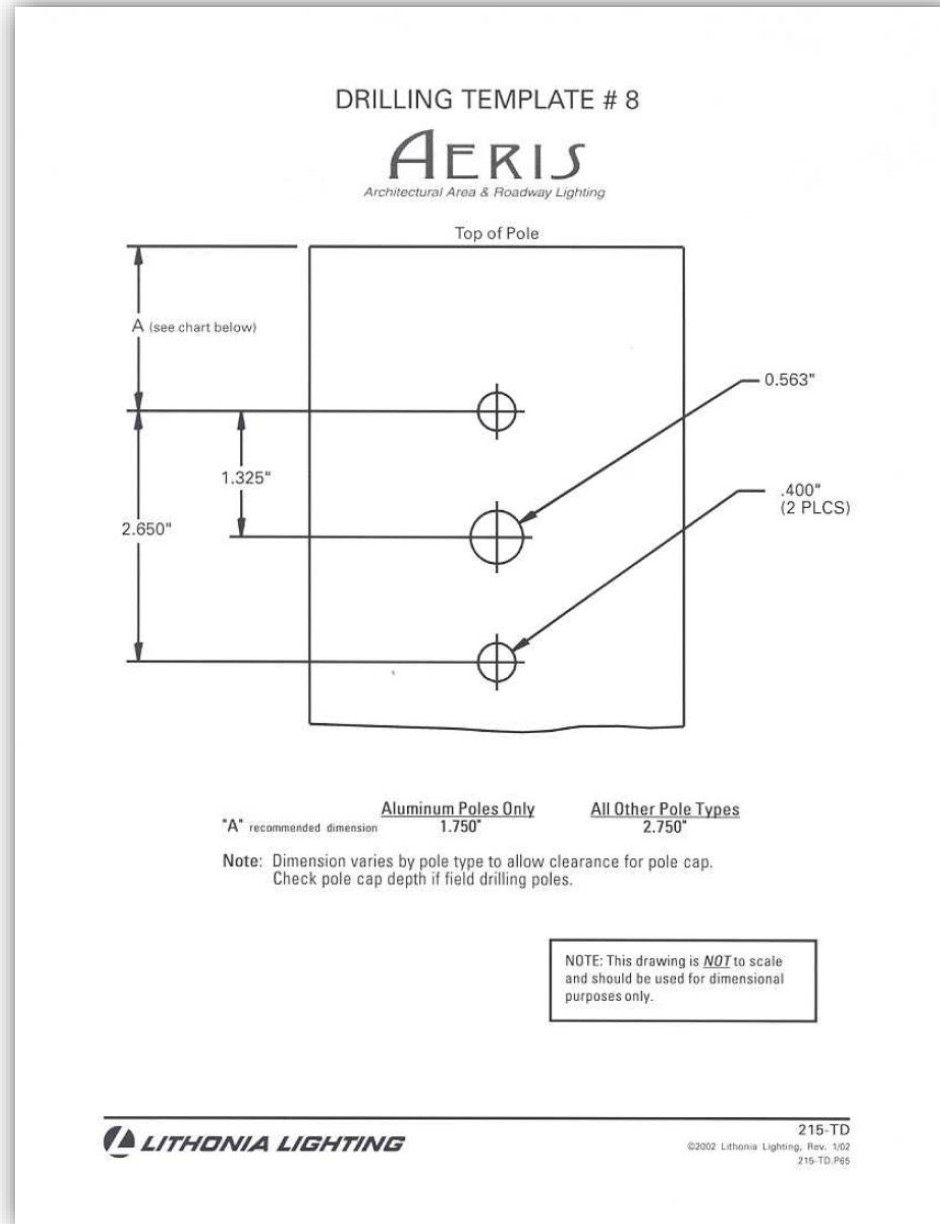
Lithonia: DMxxRAD - Template #20

Use with RAD1



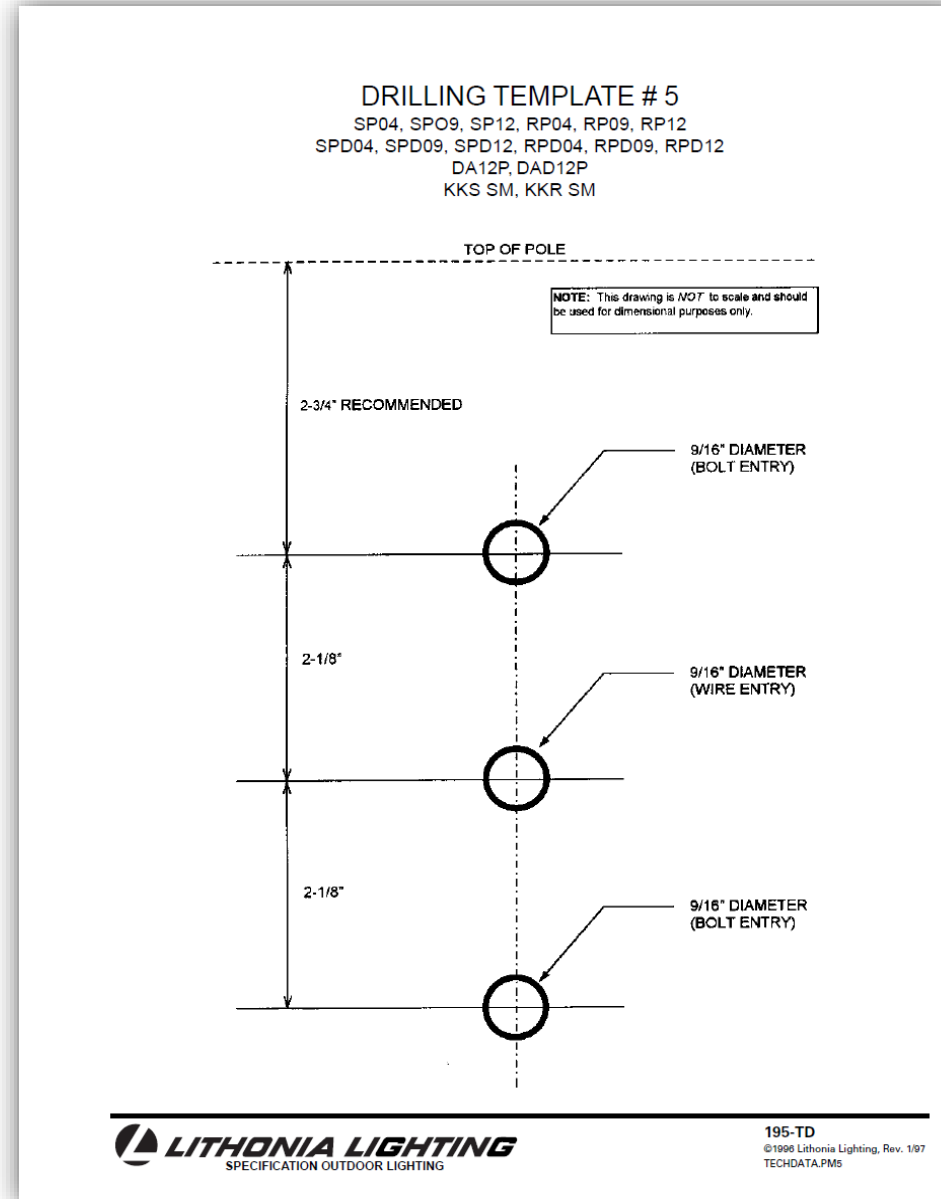
Lithonia: DMxxESX - Template #20

Use with ESX1 and RAD1



Lithonia: DMxx (Fixtures Discontinued) – Template #5

Use with KAC, KAD, KSE, KSF,
KVF, KVR Series





Thank You

Elaine Boone

Pole Product Manager

Elaine.boone@acuitybrands.com

